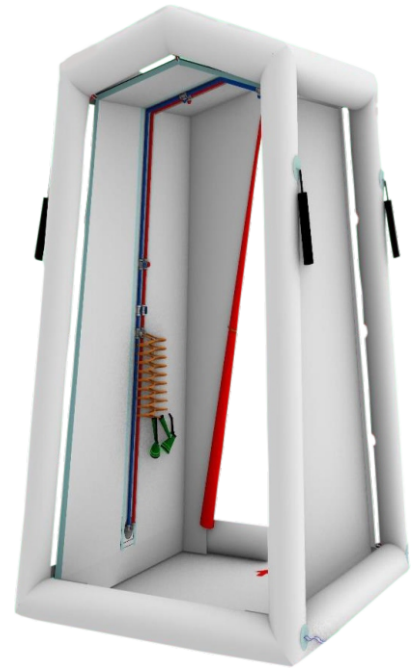




Inflatable Single Decontamination System



An inflatable single decontamination system is a rapidly deployable shelter designed for field decontamination of personnel following contamination (chemical, biological, radiological). It features a self-standing inflatable structure, integrated shower nozzles, wastewater collection, and a compact transport footprint suitable for emergency response teams.

Salient Features:

- Adaptable for different contaminants (chemical/biological)
- Fully inflatable – no rigid frame required
- Rapid setup/ Portable & compact for storage/transportation
- Raised floor panels & sump for wastewater containment
- Craftsmanship: The main structure of the outer canopy is made using high-frequency heat sealing technology.



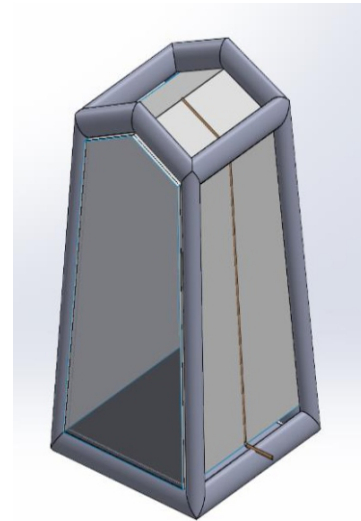
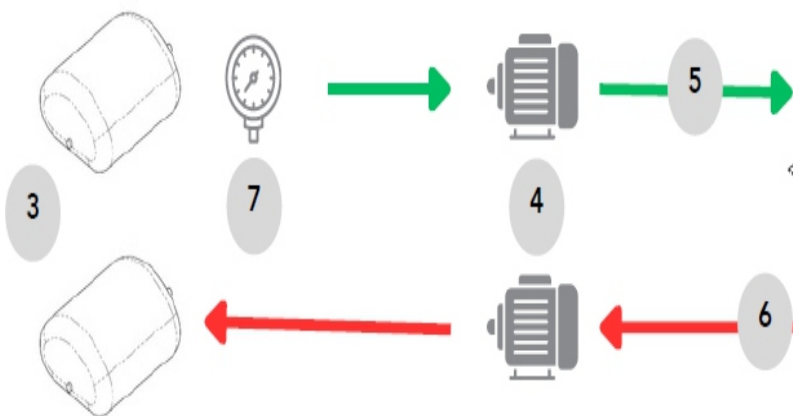
Inflatable Single Decontamination System

Physical & Structural Specifications:

| | |
|-----------------------|---|
| Structure | Inflatable tent/shower cabin |
| Material | Coated PVC / PU fabric (waterproof, UV resistant) |
| Deployment Time | 2–8 minutes |
| Deployment Personnel | 2 persons |
| Exterior Dimensions | Projection size: 2 m*2m*2.4m (±50mm), |
| Internal Working Area | 3.8 m² |
| Packed Size | 0.8m*0.7m*0.5m (varies by model) |
| Weight | 35–42 kg |
| Operating Temp. Range | -25 °C to +70 °C |

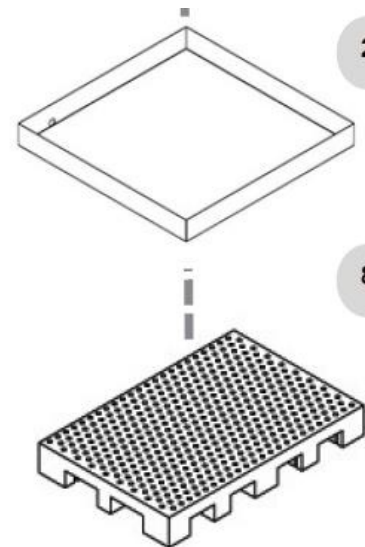
Decontamination & Shower System:

| | |
|-----------------------|--|
| Shower Nozzles | 2–5 adjustable spray nozzles (varies by model) |
| Water Inlet Pressure | Up to ~3 bar / 43 ps |
| Raised Floor | Prevents contact with contaminated runoff |
| Wastewater Management | Integrated sump; pump extraction sleeves |
| Exterior Dimensions | Manual pump / electric blower / compressed air |
| Inflation Pressure | Low pressure (0.2–0.3 bar) |



1

| Sr. No. | Connection Equipment's |
|---------|--|
| 1 | Main tent 1 piece. |
| 2 | Water collection tray |
| 3 | Water tank (clean tank/Decontaminated tank). |
| 4 | 3-pound hammer 1 piece. |
| 5 | Water hose for clean water. |
| 6 | Water hose for decontaminated. |
| 7 | Pressure valve. |
| 8 | Standing tray |



2

8



Inflatable Single Decontamination System

Environmental & Structural Data:

| Condition | Specification |
|------------------------|--|
| Wind Stability | Can withstand 8-level strong winds |
| Rain & Snow Resistance | 15 mm/h and 10kg/m ² |
| Reinflation cycle: | ≥7 days |
| Storage temperature: | 3-pound hammer 1 piece. |
| Window | 1Transparent Clear window panels with privacy curtains |
| Vent | Φ400mm (±20mm), with sleeves and covers, a total of 1. |
| About the door | Patch type, a total of 2 Nos, |
| Packing size | 0.8m*0.7m*0.5m |




Configuration:

| Sr. No. | Configuration |
|---------|---|
| 1 | Main tent 1 piece. |
| 2 | Low-pressure inflation and exhaust pump 1 set. |
| 3 | 500mm triangular ground stakes 4 pieces. |
| 4 | 3-pound hammer 1 piece. |
| 5 | Repair glue 1 can. |
| 6 | Repair patches of 100mm*100mm for outer canopy and ground cloth materials, 5 pieces each. |
| 7 | Outer package 1 piece |



Inflatable Single Decontamination System




Accessories (Standard & Optional)

| Accessories Specification | Technical specification |
|---------------------------------------|--|
| Low-Pressure Inflation & Exhaust Pump | Dual-function pump for tent inflation and deflation; electric/manual combo  |
| Clean Water Hose Chemical retardant | Water hose pipe for clean and decontamination carrying pipe which is chemical retardant and standard temperature operation specs  |
| Spray Gun & Hose | Water jet spray for on handheld decontamination standard connecting with water hose pipe  |



Inflatable Single Decontamination System

Accessories (Standard & Optional)

| Accessories Specification | Technical specification |
|---------------------------|---|
| Generator (Optional) | Generator 6kW 4-stroke petrol  |
| Water inlet pump | For supplying decontamination fluid and fresh water fluid Tec Spec (Self priming centrifugal pump, 60 Liters/minute, power rating 0.37 kW (single phase) 230V) Lightweight and portable with carrying handle)  |
| Water outlet pump | For draining contaminated water with auto cutoff feature Tec Spec (Submersible sump pump, 80–100 litre/minute 0.5–0.75 kW 230V AC, Automatic start/stop via float switch)  |



Inflatable Single Decontamination System

Accessories (Standard & Optional)

| Accessories Specification | Technical specification |
|--|--|
| Water collection tray/ standing pallet | Dimensions as per floor area 3.8m ²  A yellow plastic water collection tray with a black grid pattern on top and four yellow legs. |
| Dosatron (Optional) | Constant proportion dilution of chemical solvents Dosatron Comparable Water Dosing Medicator Injector Pump  A blue and black Dosatron pump with a black hose and a red trigger. |
| Water Tank (Optional) | Inflatable water tank 500L/1000L as per customer requirements  A green inflatable water tank with a red valve at the bottom and a black handle on top. |



Inflatable Single Decontamination System

Accessories (Standard & Optional)

| Accessories Specification | Technical specification |
|--|---|
| Washing& Heating (Optional) | Washing and disinfection machine (Heating machine)  |
| Lighting Sets (portable LED / flood lights) (Optional) | The user can regulate the intensity of the light, choose the desired run time or select from three pre-set power levels. The system's next generation LEDs combine to radiate up to 24,000 lumens (6,000 per light head). Powered by rechargeable batteries, the system offers remote activation via a Bluetooth app which allows varied light output from 100% – 0%.  |
| Water Tank (Optional) | Inflatable water tank 500L/1000L as per customer requirments  |