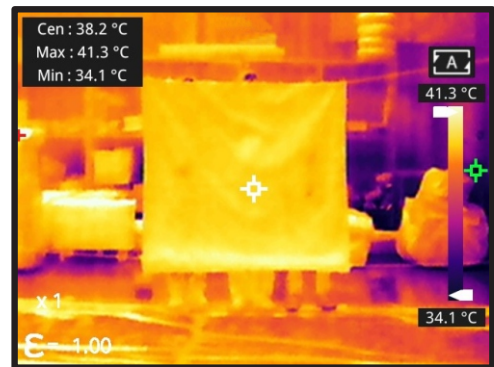


# ANTI-IR Sheet

**Stealth**



The IR Suppression Sheet is a flexible, deployable thermal and infrared signature management material designed to suppress, mask, or reduce the apparent thermal contrast of objects, equipment, shelters, vehicles, or ground installations against EO/IR sensors. The sheet operates across LWIR (8–14 μm) bands by controlling emissivity, reflectivity, and thermal diffusion.



## Intended Applications:

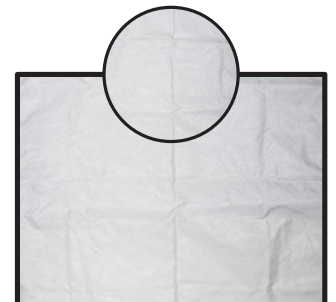
- ▶ Thermal signature suppression of equipment and assets.
- ▶ Concealment from UAV-mounted IR sensors.
- ▶ Static hide and temporary cover.
- ▶ Ground, Shelter and Vehicle thermal masking.
- ▶ Decoy and deception support.

## Construction & Design:

Parameter	Specification
Product Type	Flexible IR suppression sheet
Construction	Multi-layer laminated
Surface Finish	Matte, non-specular
Deployment	Ground-laid / Equipment



Front Layer



Back Layer

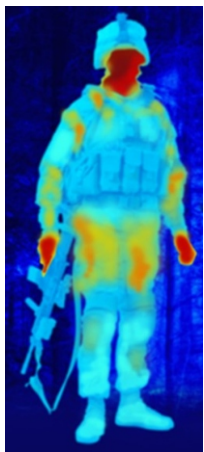
# ANTI-IR Sheet

**Stealth**

## Special Performance Requirements:

### Spectral Band Requirements

Visible (0.4–0.7 $\mu\text{m}$ )	Terrain-matched camouflage
MWIR (3–5 $\mu\text{m}$ )	Suppressed thermal contrast
LWIR (8–14 $\mu\text{m}$ )	Controlled emissivity



Human thermal signature



Blocked with Anti IR sheet

## Thermal Characteristics:

Parameter	Typical Requirement
Emissivity (8–14 $\mu\text{m}$ )	$\leq 0.6$ (background dependent)
Thermal Contrast ( $\Delta T$ )	$\leq \pm 2$ °C vs background
Heat Diffusion	Uniform surface temperature
Solar Load Response	Minimal thermal spike

## Environment Resistance:

Parameter	Requirement
Operating Temperature	-20 °C to +60 °C
Water Resistance	Water repellent
UV Resistance	UV stabilized
Dust / Sand	Resistant

